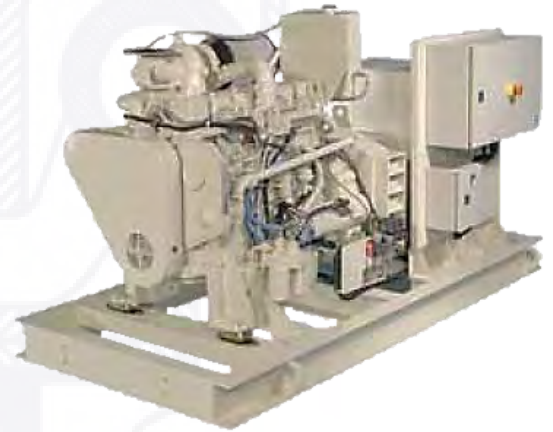


6B-CP

Marine Generator Sets



Specifications

Engine Model	Cummins 6BT5.9-D(M)
Alternator	Newage UCM274E
AVR Type	MX341
Operating Fuel	#2 Diesel, MGO
Agency Approvals	ABS, BV, DNV, GL, LR
Emissions	Not certified

Dimensions

Length	2240 mm
Width	1250 mm
Height	1270 mm
Weight	1270 kg

Dimensions and weight may vary based on selected engine configuration

Ratings

Model	Power* @ RPM	kVA @ 0.8 pf	Frequency	Voltage	Fuel Consumption	
					Rated Speed L/hr)	ISO** L/hr)
6B-CP	80 kWe @ 1500	100	50 Hz	380, 400, 415	22.4	11.3
6B-CP	99 kWe @ 1800	124	60 Hz	416, 440, 460, 480	27.1	14.0

* kWe reflects the approximate amount of power available when used in a keel cooled genset configuration

**Average fuel consumption based on ISO 8178 E3 Standard Test Cycle (variable speed models) and ISO 8178 D2 Standard Test Cycle (fixed speed models)

6B-CP

C Power Design Features

- World-class Cummins diesel engines matched to industry-leading Cummins alternators. Designed, integrated and assembled for optimal efficiency and performance
- Engineered for the tough demands of the marine environment with superior durability and high uptime requirements
- Simplified vessel integration with less complex mechanical connections
- Available with multi-station alarm and monitoring panels via a local digital network to match application requirements
- Integrated alarm system can be configured to communicate with ship's central data systems
- Flexible configurations available to customize the generating set to the vessel's operation requirements
- Comprehensive warranty applies to entire generating set and is valid globally

Engine Features

- Rugged in-line, six cylinder turbocharged diesel engine with mechanical fuel system provides excellent fuel economy and low maintenance requirements. Optional electronic speed governor
- Available in heat exchanger or keel cooled configurations
- Conforms to SOLAS surface temperature requirements and classifiable for Unmanned Machinery Space (UMS) applications as defined by IACS society rules
- Classification Society type approvals available
- Classed level units fitted with superior aluminum extruded wiring harness, duplex filtration and type-approved hardware

Alternator Features

- 12 wire, 3-phase alternator provides a broad range of re-connectable outputs
- Designed specifically for marine applications with an IP23 rating
- Single bearing close coupled permanent magnet generator provides constant excitation under all conditions
- Standard 2/3 pitch windings avoid excessive neutral currents
- Classifiable for Unmanned Machinery Space (UMS) applications as defined by IACS society rules
- Dynamically balanced rotors with sealed-for-life ball bearings
- Integrated anti-condensation heaters and two sets of thermistors