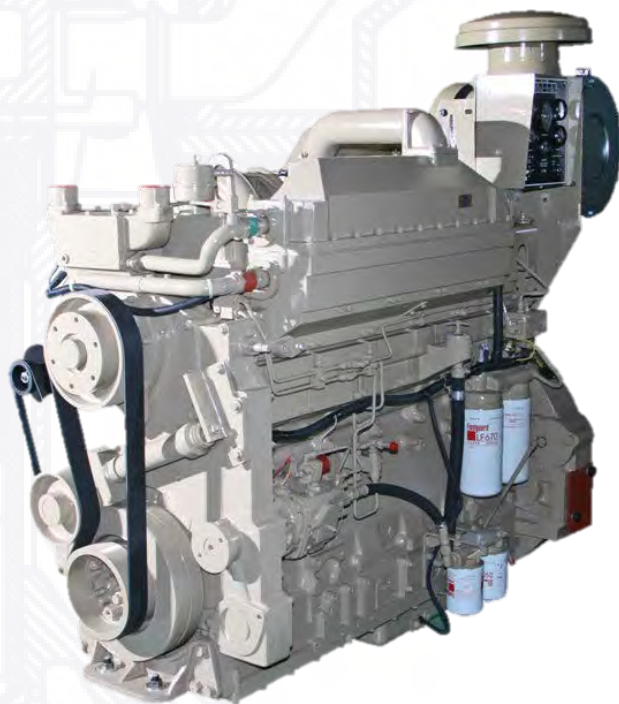


6CT/6CTA8.3-D(M)

Marine Auxiliary Engines for Commercial and Recreational Applications

General Specifications

Configuration	In-line, 6-cylinder, 4-stroke diesel
Aspiration	Turbocharged (6CT) Turbocharged / Aftercooled (6CTA)
Displacement	8.3 L (504.5 in ³)
Bore & Stroke	114 X 135 mm (4.49 X 5.32 in)
Rotation	Counterclockwise facing flywheel In-line
Fuel System	Injection Pump



Product Dimensions and Weight

Overall Length	mm (in)	1182	(47)
Length of Block	mm (in)	856	(34)
Overall Width	mm (in)	710	(28)
Overall Height	mm (in)	1137	(45)
Weight	kg (lb)	684	(1505) (6CT)
		702	(1545) (6CTA)

Dimensions and weight may vary based on selected engine configuration.

Power Ratings

Engine Model	Output Power			Engine Speed RPM	Rating Definition	Fuel Consumption		Emissions				
	kW	MHP	BHP			Rated Speed L/hr (gal/hr)	ISO* L/hr (gal/hr)	IMO	EPA	EU	RCD	
Fixed Speed												
6CT8.3-D(M)	122	166	164	1500 (50 Hz)	Prime	30.3 (8.0)	14.9 (3.9)	1	-	-	-	
6CT8.3-D(M)	140	191	188	1800 (60 Hz)	Prime	47.3 (12.5)	23.0 (6.1)	1	-	-	-	
6CTA8.3-D(M)	163	222	219	1500 (50 Hz)	Prime	40.1 (10.6)	19.3 (5.1)	1	-	-	-	
6CTA8.3-D(M)	164	223	220	1500 (50 Hz)	Prime	41.3 (10.9)	20.5 (5.4)	1	-	-	-	
6CTA8.3-D(M)	180	245	242	1800 (60 Hz)	Prime	46.6 (12.3)	23.4 (6.2)	1	-	-	-	
6CTA8.3-D(M)	188	256	252	1800 (60 Hz)	Prime	47.3 (12.5)	23.0 (6.1)	1	-	-	-	
6CTA8.3-DM	201	274	270	1800 (60 Hz)	Prime	56.6 (14.9)	27.1 (7.2)	2	-	-	-	

* Average fuel consumption based on ISO 8178 E3 Standard Test Cycle (variable speed models) and ISO 8178 D2 Standard Test Cycle (fixed speed models)

6CT/6CTA8.3-D(M)

Marine Auxiliary Engines for Commercial and Recreational Application

Features and Benefits

Engine Design – Robust in-line six cylinder designed for high hour marine applications. Single piece crossflow cylinder head for maximum durability and optimized combustion. Replaceable wet cylinder liners offer longer life and lower rebuild cost

Fuel System – Bosch in-line fuel pump operates at high injection pressures for cleaner combustion and lower emissions

Cooling System – Single loop keel cooling or engine mounted heat exchanger system available for simplified installation. Optional fan drive for radiator applications

Exhaust System – SOLAS compliant, wet exhaust manifold with shielding or water cooled design available for lower engine surface temperatures and improved emissions

Air System – Cummins turbocharger optimized for marine applications with wastegate for exceptional transient response. Marine grade air filter

Lubrication System – Standard capacity (18.9 L [20 qt]) marine grade oil pan. Cummins spin-on oil filters available handed for simplified service

Electronics – 24V standard electrical system with 12V option available

Certifications – Complies with either IMO Tier 1 or IMO Tier 2 emissions regulations as indicated. Certificates of compliance are available from the U.S. EPA and Lloyd's Register of Shipping. Consult your local Cummins professional for a complete listing of current marine agency approvals for this engine

Optional Equipment

- SAE A accessory drives
- Electronic governor available