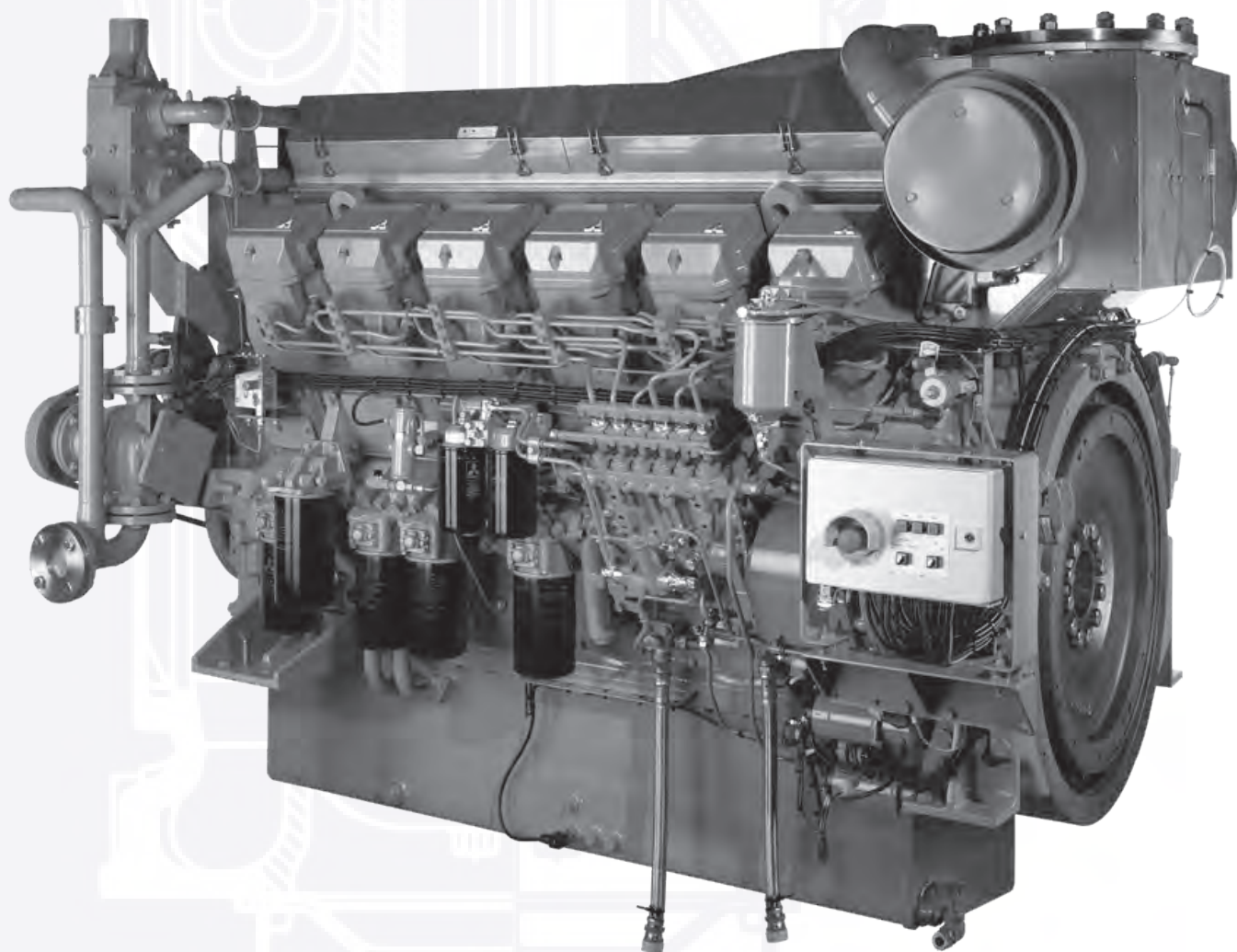


Reliable and competitive marine engines S12 Series



Propulsion - IMO Tier II / CCNR-2 / EU-3A High speed - Engine S12A2-C2MPTKM

12-cylinder, 4-cycle, water cooled diesel engine, with direct-injection, turbocharger and air-cooler.

Bore x stroke (mm) : 150 x 160

Displacement (l) : 33.93

Commercial rating

kW	bhp	rpm	Rating	Fuel cons. l/hr*	Emission
634	850	1,940	UCD	111.9	IMO-T2 / CCNR-2

Product dimensions & dry weight

L (mm) : 1,948

W (mm) : 1,442

H (mm) : 1,596

Dry weight (kg) : 3,380

Dimensions and weight are based on standard configuration.

Propulsion - IMO Tier II / CCNR-2 / EU-3A High speed - Engine S12A2-(Z3)MPTAW

12-cylinder, 4-cycle, water cooled diesel engine, with direct-injection, turbocharger and air-cooler.

Bore x stroke (mm) : 150 x 160

Displacement (l) : 33.93

Commercial rating

kW	bhp	rpm	Rating	Fuel cons. l/hr*	Emission
634	850	1,940	UCD	111.9	IMO-T2 / CCNR-2

Product dimensions & dry weight

L (mm) : 1,948

W (mm) : 1,442

H (mm) : 1,596

Dry weight (kg) : 3,380

Dimensions and weight are based on standard configuration.

Propulsion - IMO Tier II / CCNR-2 / EU-3A High speed - Engine S12R - (Z3)MPTAW

12-cylinder, 4-cycle, water cooled diesel engine, with direct-injection, turbocharger and air-cooler.

Bore x stroke (mm) : 170 x 180

Displacement (l) : 49.03

Commercial rating

kW	bhp	rpm	Rating	Fuel cons. l/hr*	Emission
588	789	1,400	UCD	on request	IMO-T2
696	933	1,500	UCD	on request	IMO-T2
749	1,004	1,500	UCD	on request	IMO-T2
749	1,004	1,600	UCD	on request	IMO-T2
940	1,261	1,600	UCD	160.5	IMO-T2 / EU-3A
1,040	1,395	1,650	HD	178.7	IMO-T2 / EU-3A

Product dimensions & dry weight

L (mm) : 2,416

W (mm) : 1,585

H (mm) : 1,807

Dry weight (kg) : 5,470

Dimensions and weight are based on standard configuration.

 **MITSUBISHI TURBOCHARGER AND ENGINE EUROPE B.V.**

Diesel&Gas Service
111524, Россия, г. Москва, Проезд Фрезер, д.2, стр.107
Телефон: +7 (495) 775 01 27
E-mail: info@dieselgass.ru