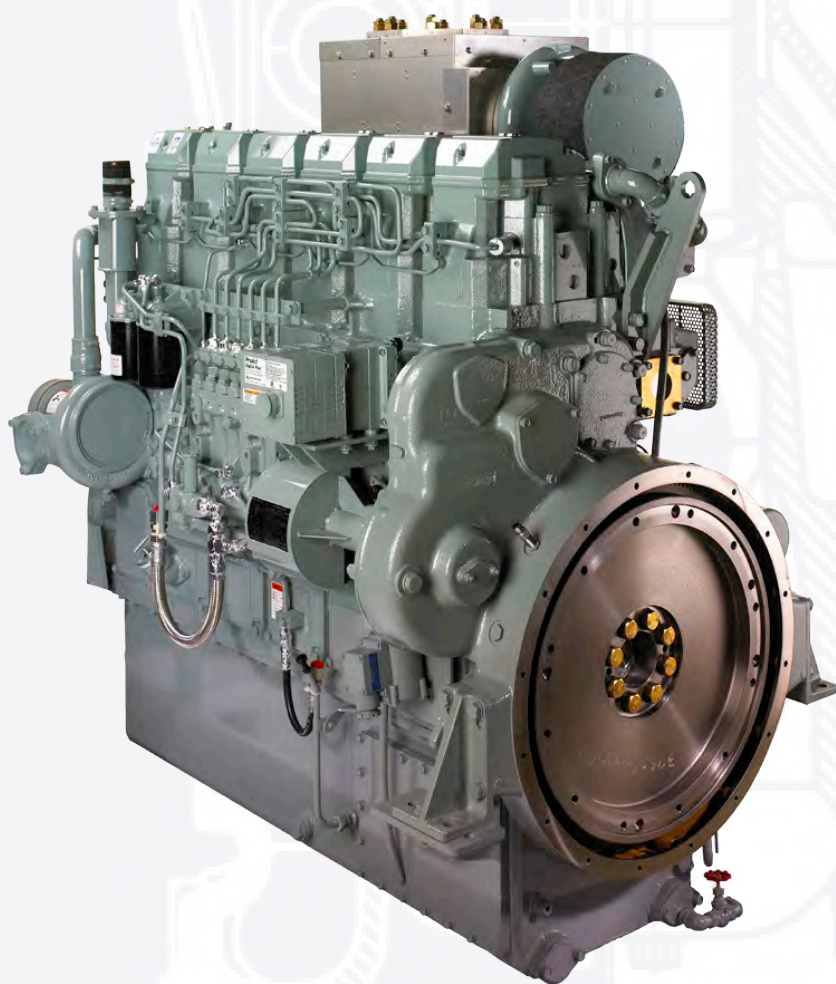




Reliable and competitive marine engines S6R2 Series



New

- New released Heavy Duty high output ratings (IMO Tier II)

Applications

- Tugboats
- Fishing and working boats

Features

- Compact in size
- Optimum fuel consumption
- High output
- High torque

Specifications

- Equipped with high-performance proprietary Mitsubishi turbochargers

Commercial rating (IMO Tier II compliant)

| | | kW | BHP | RPM | Rating ¹ | Cooling ² | Propellor ³ |
|---------------------|----------------------------|-------------|-------|-------|---------------------|----------------------|------------------------|
| Propulsion | S6R2-T2MPTK | 324 | 435 | 1,350 | UCD | IC/SW | CPP/FPP |
| | S6R2-T2MPTK | 380 | 510 | 1,350 | UCD | IC/SW | CPP/FPP |
| | S6R2-T2MPTK | 395 | 530 | 1,350 | UCD | IC/SW | CPP/FPP |
| | S6R2-T2MPTK | 423 | 567 | 1,350 | UCD | IC/SW | CPP/FPP |
| | S6R2-T2MPTK | 480 | 644 | 1,350 | UCD | IC/SW | CPP/FPP |
| | S6R2-T2MPTK | 530 | 711 | 1,400 | HD | IC/SW | CPP/FPP |
| | S6R2-T2MPTK | 610 | 818 | 1,500 | MD | IC/SW | CPP/FPP |
| | S6R2-T2MPTAW3M | 460 | 617 | 1,350 | UCD | IC | CPP/FPP |
| | S6R2-T2MPTAW3M | 480 | 644 | 1,350 | UCD | IC | CPP/FPP |
| | S6R2-T2MPTAW3M | 555 | 744 | 1,350 | UCD | IC | CPP/FPP |
| | S6R2-T2MPTAW3M | 645 | 865 | 1,400 | HD | IC | CPP/FPP |
| | S6R2-T2MPTAW3M | 691 | 927 | 1,406 | HD | IC | CPP/FPP |
| | S6R2-T2MPTK3M | 691 | 927 | 1,406 | HD | SW | FPP |
| | S6R2-T2MPTK3L | 759 | 1,018 | 1,406 | MD | SW | FPP |
| | Diesel-electric propulsion | S6R2-T2MPTK | 500 | 671 | 1,200 | 60HZ | IC/SW |
| S6R2-T2MPTK | | 640 | 858 | 1,500 | 50HZ | IC/SW | n.a. |
| Auxiliary generator | S6R2-T2MPTK | 500 | 671 | 1,200 | 60HZ | IC/SW | n.a. |
| | S6R2-T2MPTK | 640 | 858 | 1,500 | 50HZ | IC/SW | n.a. |

Definitions

| | | | | | | |
|-------------|-------|--------------------------------|-----|----------------------------------|----|---------------|
| 1 Rating | - UCD | : Unrestricted Continuous Duty | HD | : Heavy Duty | MD | : Medium Duty |
| 2 Cooling | - IC | : Intermediate cooling | SW | : Direct seawater to intercooler | | |
| 3 Propellor | - CPP | : Controllable pitch propeller | FPP | : Fixed pitch propeller | | |

Marine engine S6R2 Series High torque, high power and fuel efficient

Mitsubishi Heavy Industries (MHI) boasts a long tradition in manufacturing engines. To date MHI has supplied more than 120,000 marine diesel engines for both main propulsion and auxiliary applications in ships and boats. Proving MHI's close and unbroken relationship with marine industries.

The S6R2-series is one of Mitsubishi's long time bestseller. The engine is designed and built in Japan and complies to the latest IMO Tier II regulations. Its high power and fuel efficient achievements make it a competitive engine. We take pride in offering you marine engines which are compact in design and providing advantages in both installation and maintenance. The engine's cylinder heads are individually divided by cylinder, and large inspection covers are available on the crankcase and the oil pan. Its original Mitsubishi fuel injection pump and turbocharger bring superb combustion matching, and a hydraulic or electronic governor is available to provide optimum control of the engine in your application. Models with direct seawater cooling can be supplied with built-up heatexchanger and seawater pump.

New

Now we have released a new Heavy Duty high output engine in the S6R2-series that is available with IC and CPP. This engine provides you with more power and complies to the IMO Tier II emission regulations.

Meet the perfect engine for your working, fishing or tugboat.

Product dimensions & dry weight:

| | |
|------------------|-------|
| L (mm): | 1,811 |
| W (mm): | 1,108 |
| H (mm): | 1,697 |
| Dry weight (kg): | 3,000 |

6-cylinder, 4-cycle, water cooled, diesel engine direct-injection, turbocharged with air-cooler.

Bore x stroke (mm) : 170 x 220

Displacement (L) : 29.96

Specifications/data can vary depending on model and are subject to change without prior notice.

