

QSK95

Marine Propulsion and Auxiliary Engines for Commercial and Recreational Applications

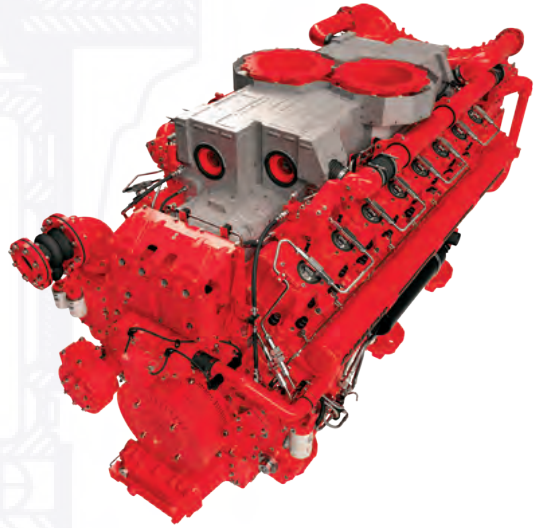
General Specifications

Configuration	V-16 cylinder, 4-stroke diesel
Aspiration	Turbocharged / Aftercooled
Displacement	95.3 L
Bore & Stroke	190 X 210 mm
Rotation	Counterclockwise facing flywheel
Fuel System	Modular Common Rail

Product Dimensions and Weight

Overall Length	mm	3654
Length of Block	mm	2598
Overall Width	mm	1728
Overall Height	mm	2362
Weight	kg	13,282

Dimensions and weight may vary based on selected engine configuration.



Power Ratings

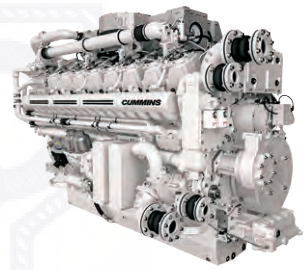
Engine Model	Output Power			Engine Speed RPM	Rating Definition	Prelim. Fuel Consumption		Emissions			
	kW	MHP	BHP			Rated Speed L/hr (gal/hr)	ISO* L/hr (gal/hr)	IMO	EPA	EU	RCD
Variable Speed											
QSK95-M	2386**	3245	3200	1500	Continuous	556 (147)	N/A	2	—	—	—
QSK95-M	2685**	3650	3600	1700	Heavy Duty	645 (170)	N/A	2	—	—	—
QSK95-M	2983**	4056	4000	1700	Medium Continuous	703 (186)	N/A	2	—	—	—
QSK95-DM	2983**	4056	4000	1800	Diesel Electric	721 (190)	N/A	2	—	—	—
QSK95-M	3132**	4259	4200	1700	Intermittent	743 (196)	N/A	2	—	—	—
Fixed Speed											
QSK95-DM	2625**	3569	3520	1500 (50 Hz)	Prime Power	600 (158)	N/A	2	—	—	—
QSK95-DM	3150**	4283	4224	1800 (60 Hz)	Prime Power	766 (202)	N/A	2	—	—	—

* Average fuel consumption based on ISO 8178 E3 Standard Test Cycle (variable speed models) and ISO 8178 D2 Standard Test Cycle (fixed speed models)

** Contact your local Cummins distributor to discuss product details and availability

QSK95

Marine Propulsion and Auxiliary Engines for Commercial and Recreational Applications



The QSK95 is designed to exceed the performance of comparable 20-cylinder high-speed engines, and is far more compact and cost-effective than medium-speed engines at this horsepower. Engineered with premium materials and the latest technologies and design features to ensure the highest performance, the QSK95 has lowest fuel consumption, cleanest emissions and lowest total cost of ownership of any Marine engine in its class. For global ship builders with varied emissions requirements, the QSK95 will meet a variety of emissions standards with a common base engine configuration.

Features and Benefits

Engine Design – Robust engine block designed for continuous duty operation and long life. Press-in place seals eliminate fluid leaks. Single-piece friction-welded steel piston and rings for exceptional durability. Cummins-designed anti-polish ring improves power cylinder life by minimizing liner wear

Fuel System – High Pressure Common Rail Fuel System provides high injection pressure up to 1800 bar for quiet operation, idle stability, improved low-end torque and reduced emissions. Patented NanoNet™ filtration provides exceptional protection against fuel contamination

Cooling System – Two pump, two loop cooling system utilizes a dual impeller, single shaft pump with premium sealing technology. Titanium plate heat exchanger provides superior durability with minimal maintenance requirements

Cummins is a pioneer in product improvement. Thus specifications may change without notice. Illustrations may include optional equipment.

Exhaust System – Dry shielded exhaust manifold meets SOLAS requirements, while reducing fuel consumption and improving performance

Air System – Cummins turbochargers optimized for marine applications. Two-stage aftercooling for improved fuel efficiency, reduced emissions and enhanced durability

Lubrication System – Spin-on filters standard or optional ELIMINATOR™ self-cleaning oil filtration system to reduce maintenance time and cost. Pre-lube pump protects engine from damage due to dry starts

Electronics – 24V electronics feature new lead-free Cummins ECM to monitor operating parameters, while providing diagnostics and complete engine protection. Customer interface box for all vessel connections to reduce installation complexity

Certifications – Complies with IMO Tier II emissions regulations. Engineered to meet the International Association of Classification Societies (IACS) and SOLAS requirements.

Optional Equipment

- SAE B accessory drive
- Turbine air starters
- C Command Elite Plus monitoring and display panels
- Fully integrated type approved alarm and safety system