

Specifications

Cylinders: V12

Engine Displacement: 13048 cu. in. (214 L)

Bore & Stroke: 10.83" x 11.81" (275 x 300 mm)

Compression Ratio: 9:1

Jacket Water System Capacity: 100 gal. (379 L)

Lube Oil Capacity: 220 gal. (883 L)

Starting System: 150 psi (10.3 bar)

Dry Weight: 50,020 lb. (22,689 kg)

Standard Equipment

AIR INLET AND EXHAUST SYSTEMS

Air Inlet Connection – Two 11" (280 mm) B.C. horizontal inlet flanges.

Exhaust Manifold – Dry with protective insulation.

Exhaust Outlet – Two 11-3/4" (298.5 mm) B.C. horizontal outlet flanges.

BARRING DEVICE – Manual.

CAMSHAFT – Consists of individual segments, one per cylinder, bolted together.

CONNECTING RODS – Low alloy, forged, fully machined.

CONTROL SYSTEM – Waukesha Engine System Manager (ESM®) integrates spark timing control, speed governing, detonation detection, air fuel ratio control, turbocharger wastegate control, turbocharger compressor bypass control, start-stop control, diagnostic tools, fault logging and engine safeties. Engine Control Unit (ECU) is central brain of the control system and main customer interface. Interface with ESM is through 25 foot (7.6 m) harness to local panel, through MODBUS RTU slave connection RS-485 multidrop hardware, and through the Electronic Service Program (ESP). Customer connections are only required to the local panel, fuel valve, and 24VDC power supply. Compatible with Woodward load sharing module. ESM meets Canadian Standards Association Class I, Division 2, Group D, hazardous location requirements.

CRANKCASE – Single piece, stress relieved, gray iron casting. Main bearing caps are retained with vertical studs and lateral tie bolts.

CRANKCASE PRESSURE RELIEF DOORS – Seven mounted on side of crankcase.

CRANKCASE VENT CONNECTION – Single 3" (76.2 mm) round pipe.

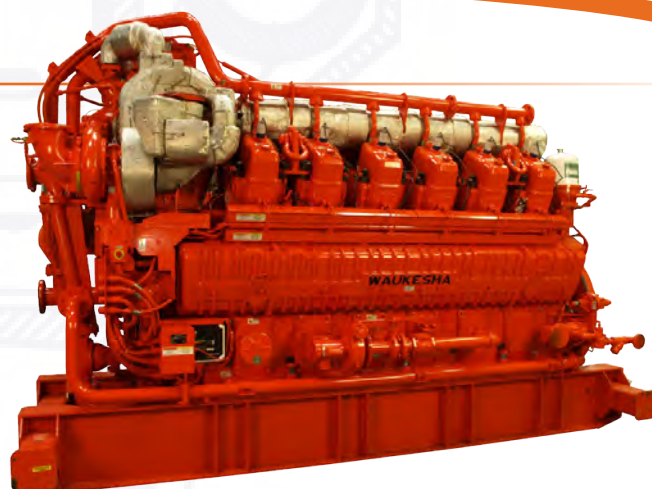
CRANKSHAFT – Low alloy, forged, fully machined, counterweighted with seven main bearing journals. The crankshaft is flanged for full power transmission from each end. Bearings are heavy duty, replaceable, precision aluminum type.

CYLINDER HEAD – Twelve interchangeable, bore-cooled with two hard faced intake and two hard faced exhaust valves per head. Includes stainless steel intake and exhaust valve seats and prechamber fuel control valves. No head gaskets are required.

CYLINDER LINER – Removable wet type with intermediate jacket water guide.

ELECTRONIC SERVICE PROGRAM (ESP) – Microsoft® Windows-based program provided on CD-ROM for programming and interface to ESM. Includes E-Help for troubleshooting any ESM faults. Serial harness is provided for connection of a customer supplied laptop to the ECU RS-232 port.

ENGINE MONITORING DEVICES – Factory mounted and wired sensors for lube oil pressure and temperature; intake manifold temperature and pressure; overspeed; and jacket water temperature; all accessible through ESM®. ESM continually monitors combustion performance through accelerometers to provide detonation protection. Dual magnetic pick-ups are used for accurate engine speed monitoring.



ESM provides predictive spark plug diagnostics as well as advanced diagnostics of engine and all ESM sensors and logs any faults into non-volatile flash memory. K-type thermocouples for individual cylinder exhaust temperatures and pre and post turbocharger temperatures are wired to a common bulkhead. Includes a standard 25 foot (7.6m) exhaust thermocouple harness.

ENGINE PROTECTION DEVICES – Engine emergency shutdown/starter lockout palm button (2) mounted, one wired on either side of the engine.

FLYWHEEL – With 291 tooth ring gear. Machined for Thomas plate type coupling. Mounted. Flywheel guard not included.

FUEL SYSTEM – Carburetor with precombustion circuit. Single fuel inlet connection, mounted main and prechamber gas supply regulators and 24V DC pilot operated prechamber fuel valve. Shipped loose 24V DC pilot operated main fuel valve.

GOVERNOR – Electric throttle actuator controlled by ESM with throttle position feedback. Governor tuning is performed using ESP.

IGNITION SYSTEM – Ignition Power Module (IPMD) controlled by ESM, with spark timing optimized for any speed-load condition. Dual voltage energy levels automatically controlled by ESM to maximize spark plug life. Shielded ignition components that meet Canadian Standard Association Class 1, Division 2, Group D hazardous location requirements.

INTERCOOLER – Air-to-water, for 130° F (54° C) inlet water.

LUBRICATION SYSTEM – Gear driven, externally mounted gear type pump with pressure regulator and bypass circuit. Fully mounted and integrated plate type oil cooler and full flow lube oil filters. Includes centrifugal oil bypass filtration for maximum oil and filter life. Mounted pre-lube pump accepts common air or electric motor drives.

PAINT – Oilfield orange.

PISTON – Single piece, aluminum alloy with integrally cast cooling passages. Four piston rings with the top two compression rings housed in a Ni-resist ring carrier. 9:1 compression ratio.

STARTING SYSTEM – One TDI 112 turbine pneumatic starter with 24VDC starting valve and strainer. Requires 150 psig (10.3 bar) air/gas supply.

TURBOCHARGER – Two, exhaust driven. Wastegate and compressor bypass actuators controlled by ESM.

VIBRATION DAMPER – Enclosed, hydrolastic.

WATER CIRCULATION SYSTEM

Auxiliary Circuit – Includes mounted 130° F (54° C) auxiliary water temperature control valve with mounted bypass, gear driven water pump, mounted intercooler, and mounted oil cooler. Provides single customer inlet and single customer outlet connection.

Engine Jacket – Includes mounted 180°F (82°C) jacket water temperature control valve with mounted bypass and gear driven water pump. Provides single customer inlet and single customer outlet connection.

POWER RATINGS: 12V275GL Gas Engines - Constant Torque

CONTINUOUS DUTY					Brake Horsepower (kWb)	
Model	I.C. Water Inlet Temp.	C.R.	Bore & Stroke in. (mm)	Displ. cu. in. (litres)	1000 RPM	900 RPM
12V275GL	130° F (54° C)	9:1	10.83 x 11.81 (275 x 300)	13048 (214 L)	3375 (2517)	3037 (2265)

PERFORMANCE DATA: 12V275GL Gas Engines

Intercooler Water Temperature 130°F (54°C)		1000 RPM		900 RPM	
		Low Fuel Consumption	Low NOx	Low Fuel Consumption	Low NOx
	Power bhp (kWb)	3375 (2517)	3375 (2517)	3037 (2265)	3037 (2265)
	BSFC (LHV) Btu/bhp-hr (kJ/kWh)	6498 (9193)	6797 (9616)	6387 (9036)	6679 (9449)
Emissions	NOx g/bhp-hr (mg/Nm ³ @ 5% O ₂)	1.5 (675)	0.75 (340)	1.5 (675)	0.75 (340)
	CO g/bhp-hr (mg/Nm ³ @ 5% O ₂)	1.8 (810)	2.0 (900)	1.7 (765)	1.9 (855)
	NMHC g/bhp-hr (mg/Nm ³ @ 5% O ₂)	0.7 (315)	0.7 (315)	0.7 (315)	0.7 (315)
	THC g/bhp-hr (mg/Nm ³ @ 5% O ₂)	4.1 (1840)	4.5 (2020)	4.1 (1840)	4.5 (2020)
Heat Balance	Heat Rejection to Jacket Water Btu/hr*1000 (kW)	2230 (654)	2249 (659)	2037 (597)	2052 (601)
	Heat Rejection to Intercooler Btu/hr*1000 (kW)	1853 (543)	1922 (563)	1642 (481)	1708 (501)
	Heat to Lube Oil Btu/hr*1000 (kW)	751 (220)	736 (216)	610 (179)	592 (173)
	Total Heat to Auxiliary Btu/hr*1000 (kW)	2604 (763)	2658 (779)	2252 (660)	2300 (674)
Intake/Exhaust System	Induction Air Flow SCFM (Nm ³ /hr)	8714 (13124)	9121 (13737)	8028 (12091)	8400 (12651)
	Exhaust Gas Flow Rate lb/hr (kg/hr)	38141 (17301)	39920 (18108)	35137 (15938)	36765 (16676)
	Exhaust Stack Temperature °F (°C)	877 (469)	917 (492)	820 (438)	860 (460)

NOTES:

All natural gas engine ratings are based on a fuel of 900 Btu/ft³ (35.3 MJ/nm³) SLHV, with a 91 WKI®. For conditions or fuels other than standard, consult the Dresser Waukesha Application Engineering Department.

Data based on standard conditions of 77° F (25° C) ambient temperature, 29.53 inches Hg (100kPa) barometric pressure, 30% relative humidity (0.3 inches Hg /1 kPa water vapor pressure).

- 1) Performance ratings are based on ISO 3046/1-1995 with mechanical efficiency of 90% and Tcra limited to ± 10° F.
- 2) Fuel consumptions based on ISO 3046/1-1995 with a +5% tolerance for commercial quality natural gas having a 900 Btu/ft³ saturated low heat value.
- 3) Heat rejected to auxiliary circuit is sum of heat rejected to intercooler and lube oil.

